



LOCKADO™

STRONGER HOLD, MORE CONTROL

The LOCKADO™ was designed by MICRO-TECH to stop bleeding more efficiently. The main reason for this is the increased compression pressure. Thanks to the improved locking force, the clip is also suitable for treating large lesions, defects and tumor tissue by providing a reliable grip. The hold is enhanced by ten teeth, six of which are positioned laterally. They ensure optimal inclusion and

retention of the tissue. Repeated positioning before clip final deployment enables more precision and flexibility. The clip segment protruding into the lumen is particularly short and thus reduces the risk of injuries to the opposing tissue. The range includes four models with different span widths, so that you always have the right clip size to choose from for all needs and applications.

SPECIFIC CHARACTERISTICS

- Maximum span of up to 20mm
- Stop bleeding quickly and safely
- Increased compression pressure
- Ten teeth ensure ideal hold
- Repeated opening and closing before fixation
- Good fixation due to better adaptation of tissue
- Reliable closure for large defects
- Short clip segment for minimized tissue damage
- Precise control even in angled areas
- Reliable 360° bidirectional rotation
- 1:1 Transfer
- MRI ready



The short clip section protrudes only a few millimeters into the lumen, thus sparing the tissue on the opposite side.



The clip can be rotated with precision, both to the left and to the right. Even the most minute movements of the handle are transmitted with precision.



The LOCKADO™ range includes clips with different spans: 8, 11, 16mm, and now also the LOCKADO™ G-Type with a span of 20mm.

LOCKADO™ G-TYPE

QUALITY IN A NEW SIZE

With the LOCKADO™ G-Type, MICRO-TECH has set a new standard for clip-based hemostasis. Its span of 20mm can enclose a particularly large amount of tissue, so that even larger lesions, defects and tumors can be treated with just a few clips. In addition to ten teeth, the LOCKADO™ G-Type clips are also equipped with two hooks, which help to hold the tissue in place and offer optimal support during fixation.

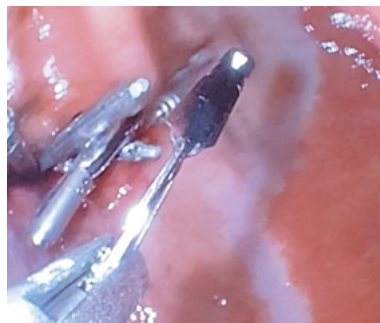


10 TEETH FOR MORE HOLD



PRECISE CONTROL

The LOCKADO™ models come with a three-ring handle for greater comfort. All handles are ergonomically designed and ensure precise control of the clip. The clip can be rotated to the left and right by 360°, and it can also be opened and closed several times. Controlled fixation at any time – even in regions that are difficult to reach. Even the most minute movements are directly and precisely transmitted to the distal end. For quick assignment, the handles are marked in different colors.



VERSATILE APPLICATIONS

- Closure after POEM therapy
- Closure after Zenker's diverticulotomy
- Adaptation of wound edges according to ESD

SPECIFICATIONS

| REF | Clip max. span width mm | Length mm | Clip angle | Instrument Ø mm | Grip color | Covering |
|------------------------|----------------------------|--------------|------------|--------------------|------------|----------|
| LOCKADO™ G-Type | | | | | | |
| LOCK-G-26-195-C | 20 | 1950 | 135° | 2.6 | Grey | Grey |
| LOCK-G-26-230-C | 20 | 2300 | 135° | 2.6 | Grey | Grey |
| LOCKADO™ | | | | | | |
| LOCK-C-26-195-C | 8 | 1950 | 135° | 2.6 | Pink | Pink |
| LOCK-C-26-230-C | 8 | 2300 | 135° | 2.6 | Pink | Pink |
| LOCK-D-26-195-C | 11 | 1950 | 135° | 2.6 | Blue | Blue |
| LOCK-D-26-230-C | 11 | 2300 | 135° | 2.6 | Blue | Blue |
| LOCK-F-26-195-C | 16 | 1950 | 135° | 2.6 | Yellow | Yellow |
| LOCK-F-26-230-C | 16 | 2300 | 135° | 2.6 | Yellow | Yellow |

Packing unit: 10 pcs.