


QUICK GUIDE VIO® 300 S

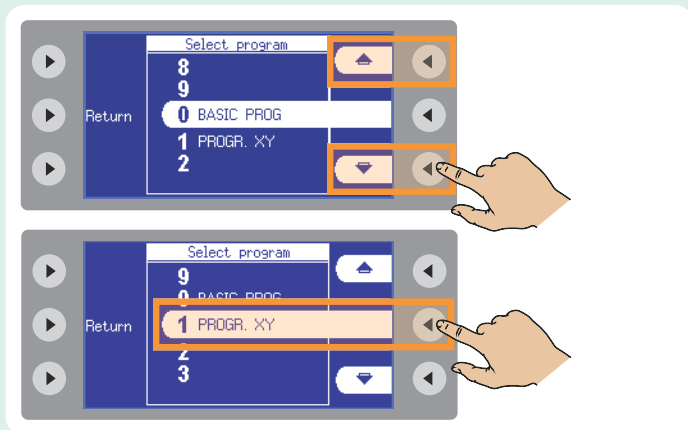
 This quick guide is no substitute for briefing and user manual. This quick guide does not include any safety notes. Make yourself familiar with the safety notes in the user manuals.

Necessary operating steps

1 Switch on the device

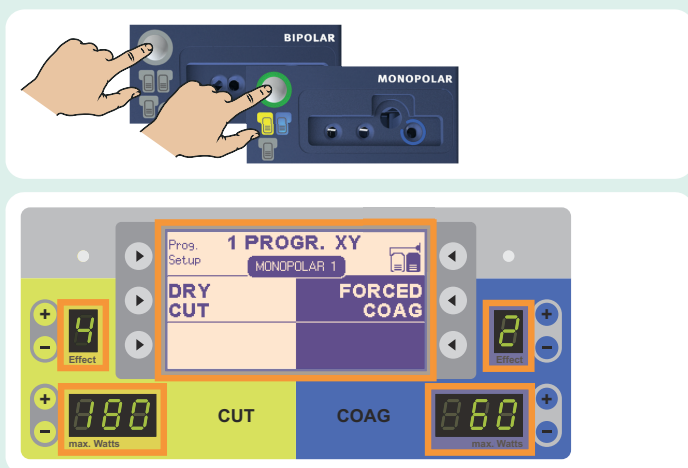


2 Select and adopt program



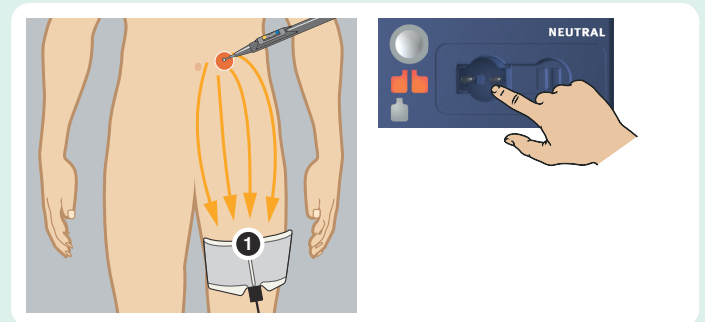
3 Check settings

Check the settings of the instrument receptacles used by pressing their focus buttons one by one.



4 Apply and connect return electrode

Only if you are using a monopolar instrument.



The long edge of the return electrode (1) must point to the operating field.

5 Monitor return electrode

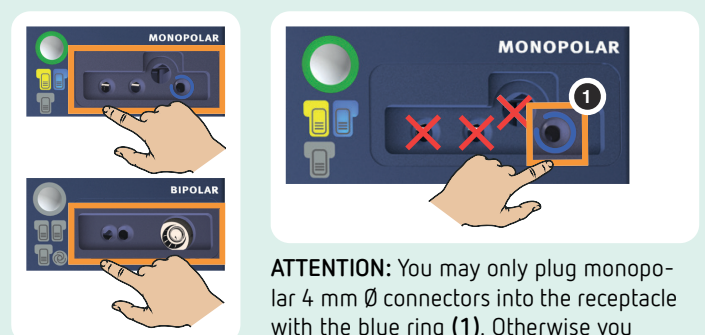
Following application and during surgery.



If the red return electrode symbol lights up, check the following:

- Is the return electrode correctly connected to the device?
- Does the long edge of the return electrode point to the operating field?
- Does the return electrode have sufficient contact to the skin?

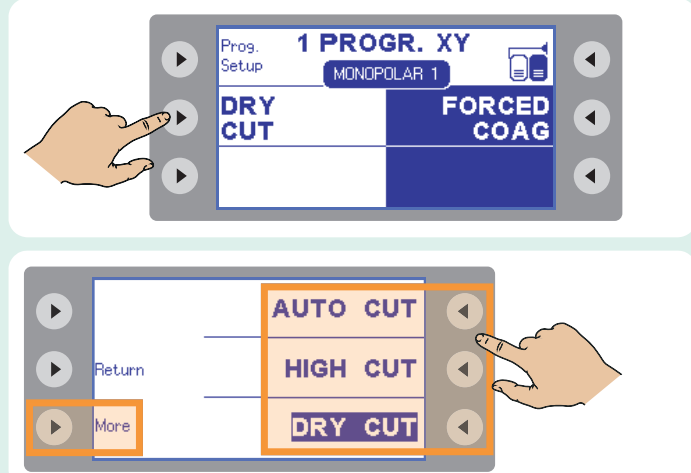
6 Connect instruments



ATTENTION: You may only plug monopolar 4 mm Ø connectors into the receptacle with the blue ring (1). Otherwise you damage the device.

Optional operating steps

7 Changing mode



With the "More"-button, you can select further modes (if available).

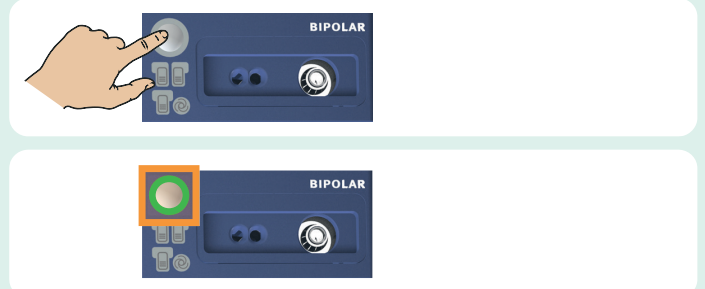
8 Changing effect



9 Changing power limit

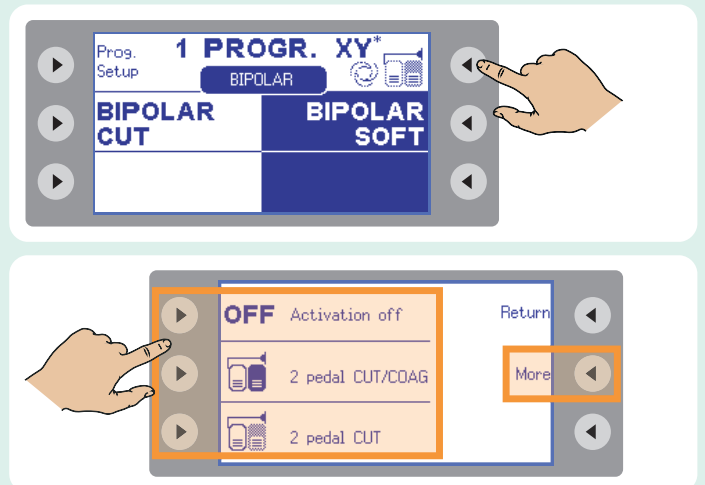


10 Selecting receptacle (e.g. BIPOLAR)



11 Allocating AUTO START or foot switch to the selected receptacle

AUTO START can only be allocated to the bipolar receptacle.



With the "More"-button, you can select further foot switch types and (if available) AUTO START.

12 For APC applications, open argon bottle

