

UMBRELLA-VALVE-STENT

THE ULTIMATE SOLUTION FOR PERFECT HOLD AND REFLUX PREVENTION

With the Umbrella-Valve-Stent, MICRO-TECH combines perfect hold with effective protection against reflux. Its innovative design prevents stent migration and avoids development of pressure necrosis in the stomach. For even greater patient comfort, the stent is also equipped

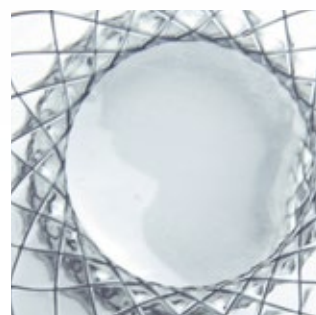
with the unique 2-way valve system from MICRO-TECH. Liquids and foods reach the stomach unimpeded through the valve system and reflux is dramatically prevented. In the event of excessive pressure, the valve opens towards the oral direction allowing the patient to vomit.

SPECIFIC CHARACTERISTICS

- Unique umbrella design
- Innovative 2-way valve system
- Self-expanding
- Nitinol mesh with atraumatic ends
- Excellent positional stability
- High radial force
- Resistant and elastic covering
- Fully covered stents available
- High radiopacity
- Extraction threads for removal and repositioning
- Guide wire-compatible up to 0.035 inches



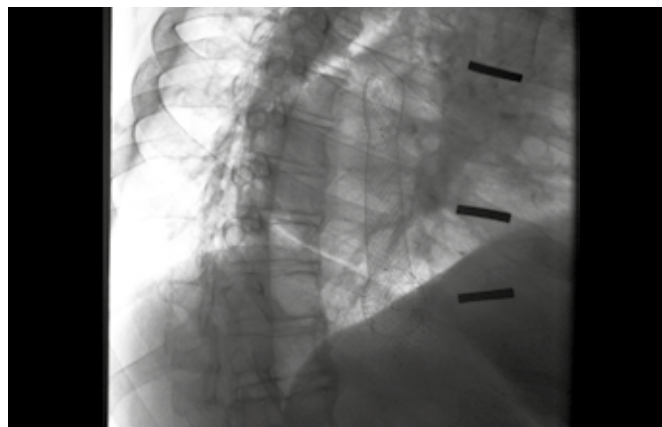
X-ray marking



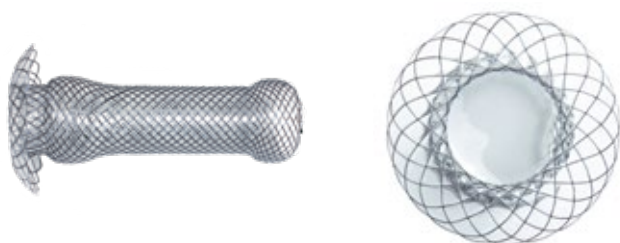
Valve

SUCCESSFUL IN PRACTICAL USE

Like every stent from MICRO-TECH, the Umbrella-Valve-Stent is characterised by excellent radiopacity which renders release of the stent easier from a radiological standpoint. Additional X-ray markings at significant points on the stent facilitate orientation and assist precise placement of the stent.



Released stent



TOP FORM DESIGN

The unique umbrella design prevents migration of the stent in the oral and gastric directions. The stents' adaptability in the area of the cardia eliminates the possibility of protruding into the stomach, which in turn prevents development of pressure necrosis to a great extent.

SPECIFICATIONS

REF	Ø centre mm	Ø end prox./bulge/end dist. mm	Length mm	Covering mm	End design	
					proximal	distal
STENTS WITH END-TO-END COVERING						
ST01-115.24.080	24	30/30/50	80	80	Spherical	Umbrella anti-reflux-valve
ST01-115.24.100	24	30/30/50	100	100	Spherical	Umbrella anti-reflux-valve
	Ø mm/fr.	Length mm	Guide wire	RM ^{*1}	IC ^{*2}	Lock ^{*3}
INTRODUCER SYSTEM						
	8,5/25	700	0.035 inch	2	Yes	Yes

Recommended guide wire: 600375-5

*1 RM – radiopaque markings / *2 IC – irrigation channel / *3 Lock – secures the introducer system during storage, transportation and introduction

Also as a special size or individual stent