

# CARDIA-VALVE-STENT

## THE EFFECTIVE SOLUTION AGAINST REFLUX

Bypass of the cardia with a stent results in gastroesophageal reflux. In order to prevent the latter and thereby minimise the risk of bronchopulmonary aspirations, the Cardia-Valve-Stent from MICRO-TECH is equipped with a unique valve system. The revolutionary aspect of the valve is its 2-way function which imitates the human protective mechanism perfectly. On the one hand, it allows food

and liquids to enter the stomach unimpeded and reliably prevents reflux. On the other, it opens in the oral direction in case of excessive pressure. The patient can therefore obtain relief by vomiting in spite of the valve. The valve is particularly flexible and at the same time highly resistant to gastric acid.

### SPECIFIC CHARACTERISTICS

- Innovative 2-way valve system
- Self-expanding
- Nitinol mesh with atraumatic ends
- Excellent positional stability
- High radial force
- Resistant and elastic covering
- High radiopacity
- Extraction threads for removal and repositioning
- Guide wire-compatible up to 0.035 inches



X-ray marking



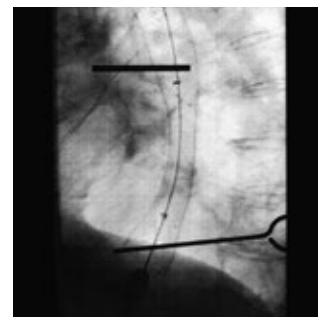
Anti-reflux valve

## SUCCESSFUL IN PRACTICAL USE

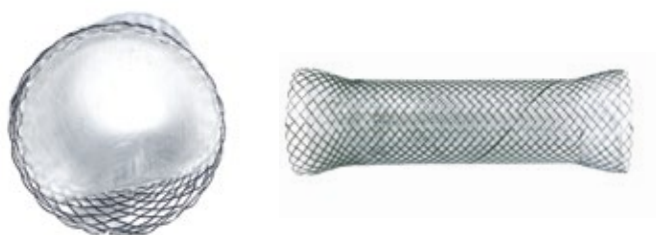
Up to now, use of anti-reflux stents, which are intended to prevent unimpeded reflux, have been controversial. With the Cardia-Valve-Stent, MICRO-TECH is offering a solution that almost perfectly imitates the natural closing mechanism. The 2-way valve, which is flat at the distal end of the stent endeavours to achieve the functional opening and closing of the sphincter.



View of the proximal tulip



Released under X-ray



## INNOVATIVE STENT DESIGN

In addition to the unique 2-way valve system, the Cardia-Valve-Stent possesses a series of features that makes it very safe. The reliable covering for instance, which is available in different versions: partially covered, without covering at the proximal end and completely covered.

## SPECIFICATIONS

REF	Ø centre mm	Ø end mm	Length mm	Covering mm	Anti-reflux valve	
<b>STENTS WITH PARTIAL COVERING</b>						
ST01-111.20.100	20	26	100	85	Distal	
ST01-111.20.120	20	26	120	105	Distal	
ST01-111.24.100	24	26	100	85	Distal	
ST01-111.24.120	24	26	120	105	Distal	
<b>STENTS WITH END-TO-END COVERING</b>						
ST01-112.20.100	20	26	100	100	Distal	
ST01-112.24.080	24	30	100	100	Distal	
ST01-112.24.100	24	26	100	100	Distal	
	Ø mm/fr.	Length mm	Guide wire	RM <sup>*1</sup>	IC <sup>*2</sup>	Lock <sup>*3</sup>
<b>INTRODUCER SYSTEM</b>						
	8,5/25	700	0.035 inch	2	Yes	Yes

Recommended guide wire: 600375-5

\*1 RM – radiopaque markings / \*2 IC – irrigation channel / \*3 Lock – secures the introducer system during storage, transportation and introduction

Also as a special size or individual stent