

CARINA-Y-STENT

THE ORIGINAL

When it comes to bridging airway stenoses around the Carina, rely on the original Y stent: the Carina Y stent from MICRO-TECH. In 2006, MICRO-TECH was the first company worldwide to develop a self-expanding Y-Stent. and is now the only manufacturer able to offer you fully developed solutions and many years of experience. Thus the innovative Y-design guarantees you a uniquely high

reliability and position stability. The newly developed insertion system also allows you to place the complex stent even more easily and precisely. With six different sizes, the extended range offers you the ideal solution for every need. In addition to stents with a trachea diameter of 16 and 20 mm, you also get stents with a diameter of 18 mm.

SPECIFIC CHARACTERISTICS

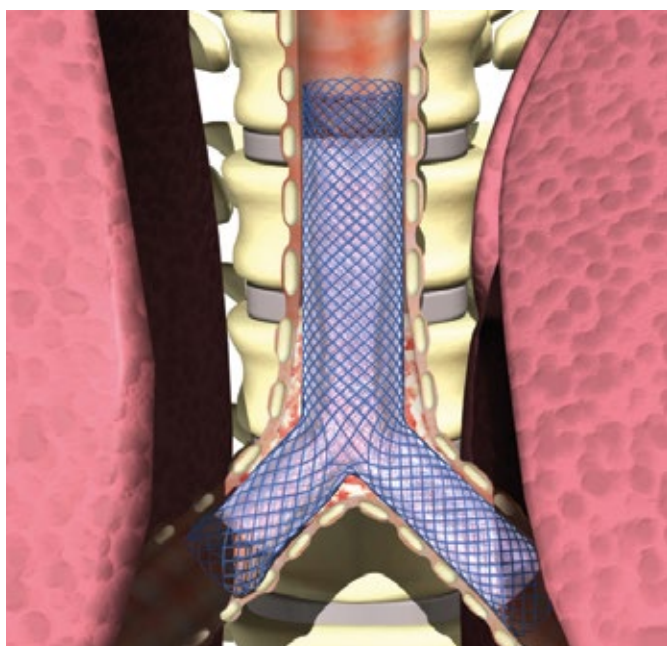
- Y-design
- Self-expanding
- Nitinol mesh with atraumatic ends
- Excellent positional stability
- High radial force
- Resistant and elastic covering
- High radiopacity
- Compatible for 2 guide wires of up to 0.035 inches



X-ray marking and covering

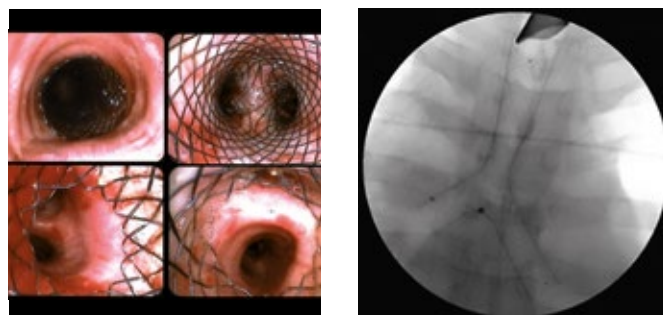


Introducer system for easy positioning

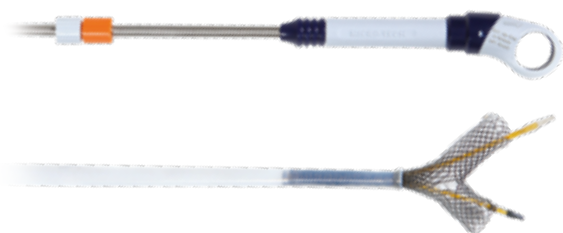


SUCCESSFUL IN PRACTICAL USE

When using the Y-stent from MICRO-TECH, the trachea, both main bronchi and the carina area can be reliably by-passed and sealed. In doing so, the covered Nitinol mesh adapts to the anatomy ideally. The excellent radiopacity of the stent and the additional X-ray markings at significant orientation points ensure precise positioning.



Photos: Positional control of released Y-stent (Dr. Dutau, Hôpital Sainte-Marguerite, Marseille)



NEW SYSTEM FOR EASY RELEASE

A specially developed and innovative delivery system facilitates precise placement. The new ergonomic design makes the handling even more comfortable and safe. Differently colored olive tips and pull rings facilitate the orientation during the release of the two bronchial arms of the Carina Y-stent.

SPECIFICATIONS

REF	Ø trachea mm	Length trachea mm	Ø main bronchi mm	Length main bronchi mm right (no. covering) / left		
CARINA-Y-STENT						
ST05-152.16.040	16	40	12	20 (5) / 30		
ST05-152.18.045	18	45	12	20 (5) / 30		
ST05-152.20.050	20	50	14	20 (5) / 30		
ST05-155.16.040	16	40	12	15 (5) / 30		
ST05-155.18.045	18	45	12	15 (5) / 30		
ST05-155.20.050	20	50	14	15 (5) / 30		
	Ø mm/fr.	Length mm	Guide wire	RM ^{*1}	IC ^{*2}	Lock ^{*3}
INTRODUCER SYSTEM						
ST05-15x.16.040	8/24	600	2 x 0.035 inch	1	Yes	2
ST05-15x.18.050	8/25	600	2 x 0.035 inch	1	Yes	2
ST05-15x.20.050	8/25	600	2 x 0.035 inch	1	Yes	2

Recommended guide wire: Set 600365-5 and 600366-5

*1 RM – radiopaque markings / *2 IC – irrigation channel / *3 Lock – secures the introducer system during storage, transportation and introduction

Also as a special size or individual stent