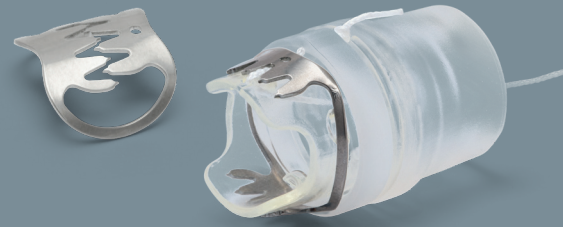


▶ NEW



stentfix OTSC® System.....

Preventing stent migration

- New clip design adapts to the wall
- Allows proximal and distal fixation
- Dedicated cap shape for easy positioning on the stent edge





..... stentfix OTSC® System

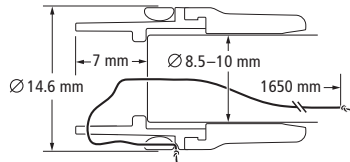
The stentfix OTSC® System is the innovative solution for stent fixation in the digestive tract. It is a specially developed OTSC® System for the fixation of metal stents.

The rounded design of the stentfix OTSC® clip adapts perfectly to the gastrointestinal anatomy (especially the esophagus) without obstructing the passage of food through the lumen.

Due to its modified cap shape, the stentfix OTSC® clip can easily be positioned parallel to the stent opening for optimal stent mesh and tissue capture by the clip.

The compact design of the stentfix OTSC® System also allows the passage through a stent (min. Ø 16 mm), therefore, its fixation is possible either proximally or distally.

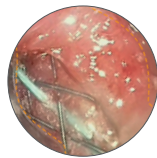
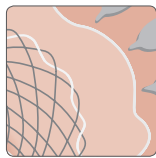
Measurements



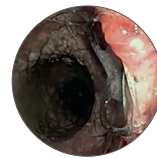
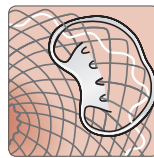
stentfix OTSC® application cap

..... Application

Proximal fixation of the stent – Clinical example*

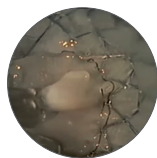
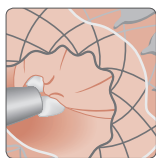


Aim at application site; align clip tooth rows parallel to stent opening so that tissue and stent mesh are evenly captured. Mobilization of tissue by suction.

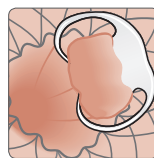


Optimal adaptation of the clip to the wall.

Distal fixation of the stent – Demonstration on Ex-vivo model



Aim at application site; align clip tooth rows parallel to stent opening so that tissue and stent mesh are evenly captured. Mobilization of tissue into the cap by grasping below the stent meshes.



Optimal adaptation of the clip to the wall.

* Source: Dr. Massimo Conio, Sanremo Hospital, Italy

Ovesco Endoscopy AG
Friedrich-Miescher-Straße 9
72076 Tuebingen
Germany

Phone +49(0)7071 96528-160
Fax +49(0)7071 96528-260
E-Mail service@ovesco.com

