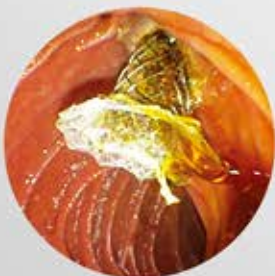


Biliary Covered Stent [Flare-Type]



The S Flare stent insertion for the resolution of biliary duct stricture due to advanced pancreatic cancer.

by Diego Fragonese et al. [DOW 2018 Abstract]

HEAD OFFICE

14, Gojeong-ro, Wolgot-myeon, Gimpo-si, Gyeonggi-do, Korea 10022

SALES OFFICE

Bldg.C 4F, 158 Haneulmaeul-ro, Ilsandong-gu, Goyang-si, Gyeonggi-do, Korea 10355
E: contact@stent.net T: +82 31 904 6153 F: +82 31 904 6157

www.taewoongmedical.com

Niti-S™ Biliary Stent [Flare-Type]

for benign and malignant biliary stricture

Features



Proximal Flange

- Located outside of the papilla

Distal Flange

- Located in the bile duct

- The full silicone-covered body prevents tissue-ingrowth
- Flares at both ends prevent migration
- A proximal retrieval string helps for easy removal or repositioning

Ordering Information

Endoscopic Approach					Percutaneous Approach				
Code	Stent		Delivery		Code	Stent		Delivery	
	Diameter (mm)	Length (cm)	Profile (fr)	Usable Length (cm)		Diameter (mm)	Length (cm)	Profile (fr)	Usable Length (cm)
BS0604FW	6	4	8.5	180	TS0604FW	6	4	8.5	50
BS0605FW		5			TS0605FW		5		
BS0606FW		6			TS0606FW		6		
BS0607FW		7			TS0607FW		7		
BS0608FW		8			TS0608FW		8		
BS0609FW		9			TS0609FW		9		
BS0610FW		10			TS0610FW		10		
BS0612FW		12			TS0612FW		12		
BS0804FW		8			4		8.5		
BS0805FW	5		TS0805FW	5					
BS0806FW	6		TS0806FW	6					
BS0807FW	7		TS0807FW	7					
BS0808FW	8		TS0808FW	8					
BS0809FW	9		TS0809FW	9					
BS0810FW	10		TS0810FW	10					
BS0812FW	12		TS0812FW	12					
BS1004FW	10		4	8.5	180	TS1004FW		10	4
BS1005FW		5	TS1005FW			5			
BS1006FW		6	TS1006FW			6			
BS1007FW		7	TS1007FW			7			
BS1008FW		8	TS1008FW			8			
BS1009FW		9	TS1009FW			9			
BS1010FW		10	TS1010FW			10			
BS1012FW		12	TS1012FW			12			

*Short-wire delivery system is available [Coding: BSM**##FW]