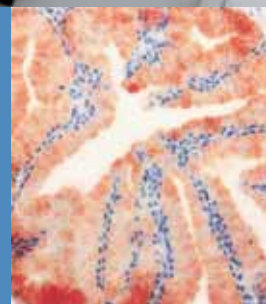


# Stainer and Coverslipper



- Thermo Scientific Varistain® 24-4 and 24-4K
- Thermo Scientific Varistain® Gemini
- Thermo Scientific StainMate
- Thermo Scientific Linistat™
- Thermo Scientific ClearVue™
- Thermo Scientific Microm CTM6



## Mix and Match for your perfect stainer and coverslipper combination – with Thermo Scientific

With a range of staining and coverslipping instrumentation designed to match the widest variety of applications and workflows, Thermo Scientific are uniquely positioned to provide an offering best suited to your laboratory. Whether it be high throughput solutions, introductions to automation or workflow improvements you are looking for, we can provide the equipment best suited to your needs. Contact us today.

### **Thermo Scientific Varistain™ 24-4 and Varistain™ 24-4K – proven solutions for high volume H&E staining**

Designed for single load, double load and continuous throughput, will stain up to 1536 slides per run.

### **Thermo Scientific Varisatin™ Gemini ES – load-on-demand stainer**

Building upon the classic Gemini stainer the ES now provides a sophisticated user interface for more intuitive operation and even greater flexibility.

### **Thermo Scientific StainMate – bi-linear batch stainer**

Providing low cost access to automated staining in a highly flexible package.

### **Thermo Scientific ClearVue™ – overcoming workflow obstacles with intelligent design**

Capable of simultaneously handling 11 slide baskets, from a variety of stainers, whilst automatically adjusting for different mountant levels, the ClearVue provides an ideal solution for high throughput laboratories where staff time is at a premium.

### **Thermo Scientific Microm CTM6 – compact automation of routine glass coverslipping.**

With its compact footprint the CTM6 is the ideal instrument to free staff from the time-consuming task of routine coverslipping.

# Proven Solutions for High-Volume H&E Staining – Thermo Scientific Varistain™ 24-4 and Thermo Scientific Varistain™ 24-4K

## Simplicity and versatility in histology and cytology staining

The Varistain 24-4 has been designed for single or double load throughput (128 slides/program). The Varistain 24-4K features an additional continuous throughput mode, which allows staining of up to 1536 (64 x 24) slides per run, making this model ideal for high volume routine protocols such as H&E staining.

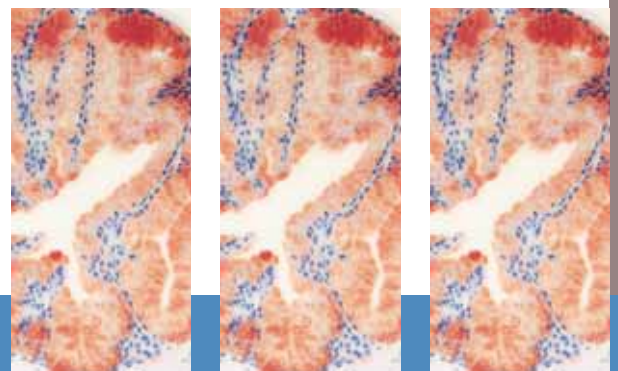


### Step by step to perfect results

- Used in cytology, haematology and histology laboratories
- Store up to three 24-step programs or six 12-step programs
- Run two programs simultaneously while utilizing the same reagents
- User-specified water stations to match your routines
- Stations hold 750 ml troughs which may be filled to 355 ml for 10-slide carriers
- Agitation is available
- Option to include the Hyperclean 2 fume containment system

### Specifications Thermo Scientific Varistain™ 24-4 and 24-4K

|                    |                 |
|--------------------|-----------------|
| Dimensions (D,W,H) | 74 x 74 x 51 cm |
| Weight             | 60 kg           |



# Thermo Scientific Varistain<sup>®</sup> Gemini ES – Highly Flexible, Load-on-Demand Stainer in a Unique Space-saving

## Improve efficiency – let Gemini optimise your staining workflow

The Varistain Gemini ES retains all the features of the original Gemini that customers have come to expect while adding a sophisticated user interface for more intuitive operation.



### Simplified ES user interface provides

- Editing capabilities for up to 15 active protocols
- Step-start capabilities for any protocol
- Simultaneous performance – run separate protocols at the same time with multiple baskets in process
- Enhanced screen graphics
- More informative help screens
- User-defined reagent names
- Direct screen access to daily functions
- Load-on-demand with urgent start option for prioritization of “urgent” baskets
- Auto-allocation for optimisation of reagent usage and slide throughput
- Auto-return allows recall of any loaded basket to the load door
- Quality control features: Displays reagent usage and batch throughput – offers entire event logs and reagent layout storage on floppy or printed formats
- Password protection keeps customized protocols safe and secure



# Design



## Additional features of the Gemini ES include

- Unique space-saving, two-tier design. Lower-level staining stations are on a turntable for easy access of reagent stations from the front of the unit
- The ability to load multiple 20-slide baskets
- Available with or without five independently heated positions
- Six running water stations
- Four configurable doors for convenient loading and unloading
- Battery back-up that delivers 40 minutes of continual staining power
- Fume control management with carbon filters or vent adapter kit
- Internal flow regulators and anti-siphon devices protect water supply
- Smart software prevents robotic arm entering user-access areas
- Baskets compatible with ClearVue coverslipper



### Specifications Thermo Scientific Varistain® Gemini ES

|                    |                 |
|--------------------|-----------------|
| Dimensions (D,W,H) | 72 x 73 x 88 cm |
| Weight             | 80 kg           |



# Thermo Scientific StainMate, the Bi-linear Batch Stainer – Low Cost Access to Automated Staining

## Programmable staining, expandable for a multitude of applications

StainMate offers low-cost access to automated staining in a remarkably flexible package. Stand-alone units are ideal for low volume laboratories, or for performing special stains, whilst multiple units can be linked to create an instrument suitable for H & E workloads.

Two models are available. The StainMate Mini with its 38ml dish/bath capacity is ideal for expensive staining techniques and special staining procedures whilst, with its larger 200ml dish/bath capacity and 30 position slide rack capacity, the StainMate Max is designed for larger batch sizes.

- Small footprint – 533 x 239 x 270 mm (W,D,H)
- Low Reagent Volumes
- Easy to operate via hand-held LCD controller with 10 program memory
- Ideal for special stains, in-clinic staining
- Suitable for rapid Giemsa and rapid Papanicolau stains
- Stain Mega and Super Mega slides as required, without compromising the throughput of your main staining instrument
- Connect multiple StainMates to create an instrument suitable for H&E staining
- Able to be operated from a 12 Volt power supply for true portability

### Accessories available

- Drying Module – an assisted slide dryer (approx. 70° C), hooks onto left or right hand side of StainMate
- Fume hood – space saving design incorporates transparent access door and replaceable charcoal filter
- Additional Dish/Bath – 200 ml capacity bath to add one or two additional reagent positions to your StainMate
- Water Dish/Bath – as the additional bath with a drain port
- Lid for Dish/Bath (individual for StainMate Mini, Stainless Steel overall for StainMate Maxi)



### Specifications Thermo Scientific StainMate

|                          |                     |
|--------------------------|---------------------|
| Dimensions (D,W,H), Max  | 23.9 x 53.3 x 27 cm |
| Dimensions (D,W,H), Mini | 14.7 x 53.3 x 27 cm |
| Weight, Max              | 8.3 kg              |
| Weight, Mini             | 6.25 kg             |



# Thermo Scientific Linistat™ – for H&E Frozen Section Protocols



## Compact design, fits neatly on the top of a cryostat

The Linistat includes 14 staining stations (20 sec. each), running water and a 13-slide capacity collection tank. Staining time is under five minutes. For situations that require hand staining, the technician may dip through the stations, eliminating the need to set up separate staining dishes.



- Continuous feeding unit allows addition/removal of slides at any time at any position on the stainer
- Adjustable running water station may be added at many positions
- Accommodates single width (125 ml) stain dishes or double width (250 ml) dishes
- A proven solution for smaller workloads

### Specifications Thermo Scientific Linistat™

|                    |                   |
|--------------------|-------------------|
| Dimensions (D,W,H) | 15.9 x 64 x 27 cm |
| Weight             | 7.3 kg            |

# Thermo Scientific ClearVue™ Glass Coverslipper – Overcoming Workflow Obstacles with Intelligent Design

## Liberate your staffs' time – High throughput plus labour savings, realised

Simultaneously handling 11 slide baskets, from a variety of stainers, whilst automatically adjusting for different mountant levels – the ClearVue provides an ideal solution for high throughput laboratories where staff time is at a premium.

The ClearVue couldn't be easier to operate, simply place baskets containing stained slides onto the load rail and remove baskets containing coverslipped slides from the unload rail – that's it.



### Perfect coverslipping – every time

You demand perfection, the ClearVue delivers. In preparing the sample for coverslipping, sensors ensure correct positioning of the slide. Vacuum and pressure controls combine to quickly and accurately mount the cover glass. Precise dispensing of mountant ensures no spills providing protection of slide grippers and the prep area.

### Correct slide positioning

Every slide is optically recognized during coverslipping to ensure correct handling. With a set of precision slidegrippers, ClearVue removes each slide for coverslipping, returning them to their original basket upon completion. If spaces between slides exist, this intuitive coverslipper will maintain the correct positioning.

### Automatic specimen recognition and mountant level adjustment

ClearVue automatically identifies and delivers the correct volume of mountant for diverse slide preparations through specimen basket recognition. This dynamic coverslipper can process both histology and cytology samples at the same time, without user intervention.

### Compatibility with a wide variety of stainers

The ClearVue accepts slide baskets from the Varistain® Gemini ES, Varistain® 24-4, Sakura DRS™ 2000 and Leica Auto-Stainer. Slide baskets from any of these stainers may be loaded into the ClearVue in a mix-or-match fashion – making everything work in harmony.

#### Specifications Thermo Scientific ClearVue™

|                             |  |
|-----------------------------|--|
| Dimensions (D,W,H)          | 57.5 x 64.5 x 50 cm                                |
| Weight                      | 50 kg  |
| Coverslip capacity          | 500 pcs (1.5 thickness)<br>575 pcs (1.0 thickness) |
| Mountant reservoir capacity | 120 ml   |
| Racks                       | 20 or 28 slide racks                               |





## Handle specialist tasks with ease – Cytology and IHC slides coverslipped perfectly

Slides designed for use with Cytology imaging systems can cause problems when coverslipping due to the raised fiducial marks. By using ClearVue's unique "central off-set transfer head", airbubbles, which arise as a consequence of these marks, can be minimized if not entirely eliminated, without the need to increase mountant volume. ClearVue is equally suited to the particular requirements of the IHC laboratory. By handling slides from the edges and use of the off-set transfer head, interference problems associated with the use of paper slide labelling systems can be eliminated.



### User-friendly touch-screen panel

- Simple instrument operation
- Software monitors type of slide preparation, size and number of slips dispensed and number of slide baskets waiting for coverslipping
- Internal disk drive allows download of technical information and software updates



### Convenient, safe and contamination-protected coverslips

- Pre-loaded hoppers make the loading and changing of coverslips quick and easy – insert hopper, close door, walk away
- No risk of environmental contamination, fingerprints or glass cuts



### Uncompromising operator and sample safety

- Battery backup allows completion of basket coverslipping in the event of power failure
- Downdraft ventilation and charcoal filtration provide user protection from harmful vapours

# The Automated Glass Coverslipper Thermo Scientific Alternative to Manual Coverslipping for Histology and

## The highest quality coverslipping, the smallest possible footprint

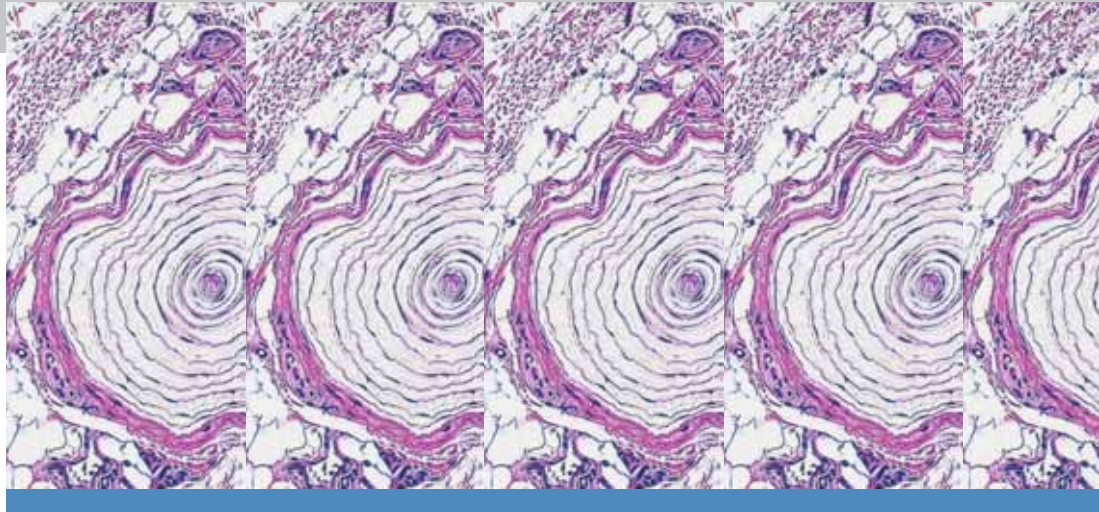
Glass coverslips provide several advantages compared to adhesive film including superior and consistent optical quality for microscopical examination. The durability of glass cover slipping is also superb and does not require any rework, even after long periods in storage.

The CTM6 uses glass coverslips of 24 x 40, 50, 55 and 60 mm, No. 1 thickness (thickness No. 1.5 optional). The device can be easily re-configured for different slide sizes or mountant formulations. Its small footprint makes it the perfect tool for any lab that wants to overcome manual coverslipping and stay flexible.

Coverslipping up to 400 slides per hour the CTM6 slide baskets are capable of holding 19 or 30 slides each.



# Microm CTM6 – The Simple Cytology



## Coverslipping made simple

- Operator safety – loading and unloading of racks without opening the hood
- Internal vapour extraction system with fan and permanent air-flow avoids any leakage of vapours at openings
- Integrated charcoal filtration
- Bubble-free mountant refill, 100ml reservoir
- Tool-free cleaning and maintenance
- Display options: German, English, French, Spanish
- Easy conversion to other coverslip sizes – all required parts included
- Adapters available for Varistain 24-4, XY, Gemini, Sakura DRS60, 601, 2000, Bavimed Carousel, HMS-MS/DS 50, 100, Leica ST4040, TST5010, Medite TST30-40-50



## Specifications Thermo Scientific CTM6

|                              |                       |
|------------------------------|-----------------------|
| Dimensions (D,W,H)           | 41 x 27.5 x 35 cm     |
| Weight                       | 19 kg                 |
| Coverslip capacity           | 400 pcs.              |
| Mountant reservoir, capacity | 100 ml                |
| Racks                        | 19- or 30-slide racks |

| Associated Products                             | Description   |
|---|---|
| Staining Reagents                               | <ul style="list-style-type: none"> <li>Thermo Scientific provides a complete range of staining reagents for your laboratory, offering choice, value for money and guaranteed quality</li> </ul>   |
| Special Stain Kits                              | <ul style="list-style-type: none"> <li>Series of special stains and reagents function as a system to visualise specific cell entities</li> <li>Supplied as convenient, ready-to-use kits or as individual components</li> <li>Quality, consistency and ease of use</li> </ul>   |
| Thermo Scientific SlideMate™<br>Slide Printer   | <ul style="list-style-type: none"> <li>On-demand labelling reduces errors</li> <li>Small footprint fits easily next to the microtome</li> <li>Flexible data inputs including easy LIS integration</li> <li>Chemical-resistant media ensure print reliability</li> </ul>   |
| Thermo Scientific MicroWriter<br>Slide Labeller | <ul style="list-style-type: none"> <li>Etches specimen identification onto the end of a microscope slide</li> <li>Etches letters, numbers, roman numerals and special characters</li> <li>Up to 6 lines of 14 characters on smallest font setting</li> <li>Auto-incrementation of alphanumerics for desired number of slides</li> </ul> |
| Slides & Coverslips                             | <ul style="list-style-type: none"> <li>Made from the finest sheet glass</li> <li>Individually selected for uniform quality and tested for cleanliness</li> <li>Custom-made products available</li> </ul>  |
| Slide Storage Systems                           | <ul style="list-style-type: none"> <li>Versatile storage systems for slides, cassettes and paraffin blocks</li> <li>Modular and stackable systems for optimising available space</li> <li>Cardboard and plastic folders and mailers available</li> </ul>  |

© 2010 Thermo Fisher Scientific Inc. All rights reserved. All trademarks are the property of Thermo Fisher Scientific Inc. and its subsidiaries.

#### Anatomical Pathology

4481 Campus Drive  
Kalamazoo, MI 49008  
USA  
+1 (800) 522-7270

Robert-Bosch-Strasse 49  
69190 Walldorf  
GERMANY  
+ 49 (0) 6227-8360

Tudor Road, Manor Park  
Runcorn, Cheshire WA7 1TA  
UNITED KINGDOM  
0800 018 9396 or + 44 (0) 1928 562501