

# Root with SedLine Brain Function Monitoring

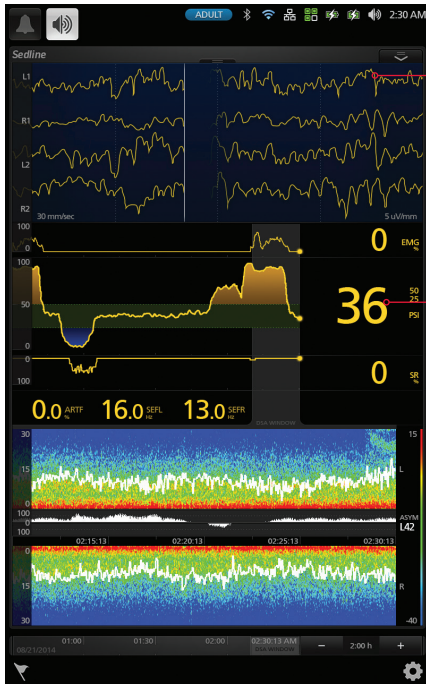
A more complete picture starts with more complete data



Root® with SedLine® Brain Function Monitoring helps clinicians improve anesthetic management

- > 4 separate simultaneous EEG channels in a single sophisticated algorithm to enable continuous assessment of both sides of the brain
- > Easy-to-interpret, high-resolution Density Spectral Array (DSA) complements Patient State Index (PSI) value by allowing clinician to compare EEG intensity over time
- > Multiple screen views expand information while enabling customization in the OR and ICU

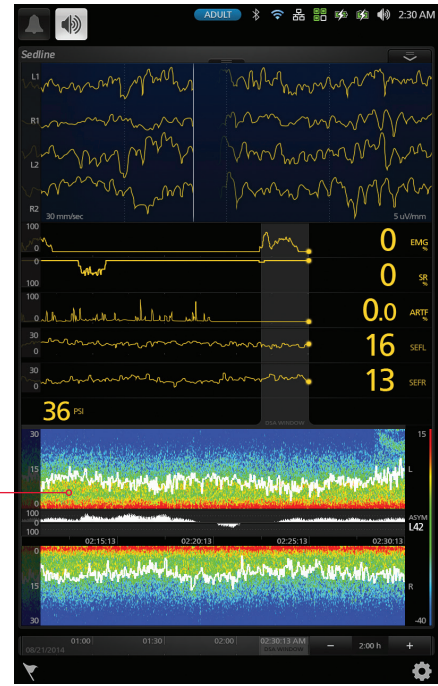
# MONITOR DISPLAY



Real-time display of 4 simultaneous channels of EEG data have the horizontal line end and spread vertically to show reference to all four EEG channels

Patient State Index (PSI™) provides a continuous numeric value to help clinicians assess depth of sedation/ anesthesia<sup>1</sup>

Density Spectral Array (DSA) facilitates immediate detection of asymmetrical activity with easy-to-interpret, high-resolution graphic of bi-hemispheric activity



The SedLine sensor is designed for ease in application and enhanced patient comfort while ensuring the highest quality data.

- > 4 active leads collect higher volume of data in key areas of frontal lobe
- > Streamlined design for quick and easy application with no plastic disk to press



The SedLine module easily plugs into the Root patient monitoring platform via Masimo Open Connect (MOC-9™) ports

## MODULE SPECIFICATIONS

PHYSICAL CHARACTERISTICS	ENVIRONMENTAL
Width..... 2 in	<b>Module Operating Conditions</b>
Length..... 4 in	Temperature at Ambient Humidity..... 5°C to 40°C
Thickness..... 3/4 in	<b>Module Storage and Shipping Conditions</b>
	Temperature at Ambient Humidity..... -40°C to 70°C
	Storage Humidity ..... 15% to 95%, non-condensing
	Exposure to Pressure ..... 500 to 1060 mbar

## SENSOR SPECIFICATIONS

Active Electrodes..... L1, L2, R1, and R2	Biocompatibility..... Noncytotoxic, nonsensitizing, and not a primary skin irritant
Ground Electrode..... CB	Latex Content..... Does not contain natural rubber latex
Reference Electrode..... CT	Sterility Level..... Non-sterile
Duration of Use..... Maximum of 24 hours	

Caution: Federal (USA) law restricts this device to sale by or on the order of a physician. See instructions for use for full prescribing information, including indications, contraindications, warnings, and precautions.

\*This study compared SedLine's predecessor, the PSA 4000, to BIS XP. However, SedLine utilizes the same amplifier technology as the PSA 4000, and internal tests show that SedLine has even greater resistance to interference than the PSA 4000.