

# EMMA™ Capnograph

Portable Real-time Capnography with Bluetooth® Connectivity



Actual Size

## Measurements



End-tidal CO<sub>2</sub>



Respiration Rate

- > **Immediate results** – minimal warm-up time, with full accuracy of end-tidal carbon dioxide (EtCO<sub>2</sub>), respiration rate (RR) measurements, and continuous EtCO<sub>2</sub> waveform displayed within 15 seconds<sup>1</sup>
- > **Airway management** – real-time EtCO<sub>2</sub> waveforms help clinicians ensure proper endotracheal tube placement,<sup>2</sup> assess the depth and effectiveness of compressions, and recognize the return of spontaneous circulation<sup>3</sup>
- > **Small, lightweight, and tetherless** – convenient during short-term EtCO<sub>2</sub> monitoring of adult, paediatric, and infant patients and stores efficiently in a crash cart
- > **Designed to fit easily onto a breathing circuit** – flexible use at multiple points of care including pre-hospital, emergency medicine, operating room, intensive care unit, long-term acute care, and patient transport
- > **Connectivity with the Root® platform** – integrates to provide a larger waveform display, trending, and seamless transfer of patient data to the electronic medical record

## Features

- > **Simple, easy-to-use interface** for quick set up and one-touch programming
- > **Battery life up to 10 hours** with two standard AAA lithium batteries
- > **Audible and visual alarm system** for No Adapter, Clogged Adapter, No Breath (Apnoea), Low Battery and adjustable High and Low EtCO<sub>2</sub> alarm
- > **Easy to maintain** with no routine calibration required

### Alarm Limits

Alarm limits and visual alarm status indicator; silence active alarms for two minutes

### End-tidal Carbon Dioxide

Quantitative, continuous EtCO<sub>2</sub> is updated every breath

### Capnogram

14.4 second sweep of CO<sub>2</sub> values

### Power Button

Warm-up time to full accuracy within 15 seconds<sup>1</sup>



### Bluetooth LE

Wireless connection to a compatible smart device or host for data storage and display

### Respiration Rate

RR is displayed after two breaths and updated every breath

### Airway Adapter

Available in adult/paediatric and infant sizes

## EMMA Specifications

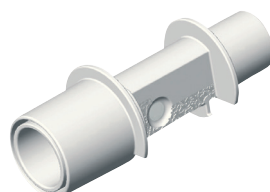
RANGES	ENVIRONMENTAL
CO <sub>2</sub> ..... 0-99 mmHg ..... 0-9.9 kPa	Operating temperature ..... -5 to 50° C (23 to 122° F) Operating atmospheric pressure ..... 70 to 120 kPa Operating humidity ..... < 40 hPa H <sub>2</sub> O (non-condensing) (95% RH at 30° C) Storage temperature ..... -30 to 70° C (-22 to 158° F) Storage atmospheric pressure ..... 50 to 120 kPa
RR ..... 3-150 bpm	
ACCURACY (STANDARD CONDITIONS)	PHYSICAL CHARACTERISTICS
CO <sub>2</sub> ..... 0-40 mmHg ±2 mmHg; 41-99 mmHg 6% of reading ..... 0-5.3 kPa ±0.3 kPa; 5.4-9.9 kPa 6% of reading	Dimensions (EMMA Bluetooth) ..... 52 x 44 x 39 mm (2.1 x 1.8 x 1.6 inches) Dimensions (EMMA Capnograph) ..... 52 x 39 x 39 mm (2.1 x 1.6 x 1.6 inches) Weight ..... < 65 g (1.2 oz) with batteries
RR ..... ±1 bpm	
BATTERIES	ADAPTER INFORMATION
Type ..... 2 (two) AAA Cell Alkaline or Lithium Battery life (EMMA Bluetooth) ..... 4 hours (Alkaline) 8 hours (Lithium) Battery life (EMMA Capnograph) ..... 5 hours (Alkaline) 10 hours (Lithium)	Dead space adult/paediatric ..... .6 ml Dead space infant ..... 1 ml

## Ordering Information



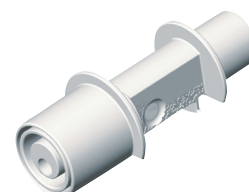
### > EMMA Kit\*

EMMA Bluetooth (mmHg) PN 4271  
EMMA Bluetooth (kPa) PN 4270  
EMMA Capnograph (mmHg) PN 3639  
EMMA Capnograph (kPa) PN 3678



### > EMMA Airway Adapter

Adult/Paediatric  
Box of 25  
PN 17448



### > EMMA Airway Adapter

Infant  
Box of 10  
PN 17449

\*In order for the EMMA Kit to provide readings, either of the listed airway adapters is required. Kit includes EMMA, pouch, and lanyard.

<sup>1</sup> Operator's Manual. <sup>2</sup> Link MS, et al. *Circulation*. 2015; 132(suppl 2): S444-S464. <sup>3</sup> Neumar RW et al. *Circulation*. 2010;122:S729-S767.

Markkinoinja Suomessa



MediQ Suomi Oy  
Riihituntie 7 D, 02200 Espoo  
puh. 020 112 1510  
asiakaspalvelu@mediq.com, www.mediq.fi

For professional use. See instructions for use for full prescribing information, including indications, contraindications, warnings, and precautions.

**Masimo U.S.**  
Tel: 1 877 4 Masimo  
info-america@masimo.com

**Masimo International**  
Tel: +41 32 720 1111  
info-international@masimo.com

