

sebia

**CAPICLEAN CAPILLARYS 3
CAPILLARYS 3 CAPICLEAN**

Ref. 2060

IVD

CE

2019/12

Intended use

For the sample probe cleaning in automated instrument for capillary electrophoresis CAPILLARYS 3, SEBIA, during the CAPICLEAN cleaning sequence.

For *In Vitro* diagnostic use.

Composition / Reagent

ITEMS	PN 2060
CAPICLEAN (ready to use)	1 vial, 25 mL
Pierceable cap for the CAPICLEAN vial (cf "PHOTOS")	1 cap

Concentrated CAPICLEAN solution contains : proteolytic enzymes, surfactants and additives nonhazardous at concentrations used, necessary for optimum performances.

WARNING : The CAPICLEAN solution may cause irritation or burns to skin, eyes and mucous membranes. See the safety data sheet.

Storage / Stability

Store CAPICLEAN refrigerated (2 – 8 °C). It is stable until the expiration date indicated on the vial label. DO NOT FREEZE. Precipitate or combined particles in suspension (flocules) may be observed in the CAPICLEAN vial without any adverse effects on its utilization. Do not dissolve this precipitate or these particles. The CAPICLEAN vial placed in the secondary compartment of the CAPILLARYS 3 instrument is stable for a maximum of 3 months.

NOTE : During transportation, CAPICLEAN can be kept without refrigeration (15 to 30 °C) for 15 days without any adverse effects on its efficiency.

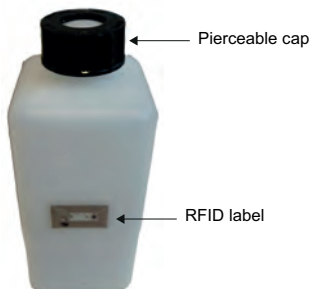
Procedure

See the instruction manual of CAPILLARYS 3, SEBIA.

1. Replace the cap of the CAPICLEAN vial by the pierceable cap. Check that the vial is perfectly closed (once in place, the pierceable cap may stay all the time on the CAPICLEAN vial if the vial is in a vertical position, do not turn the vial upside down to avoid leakages).

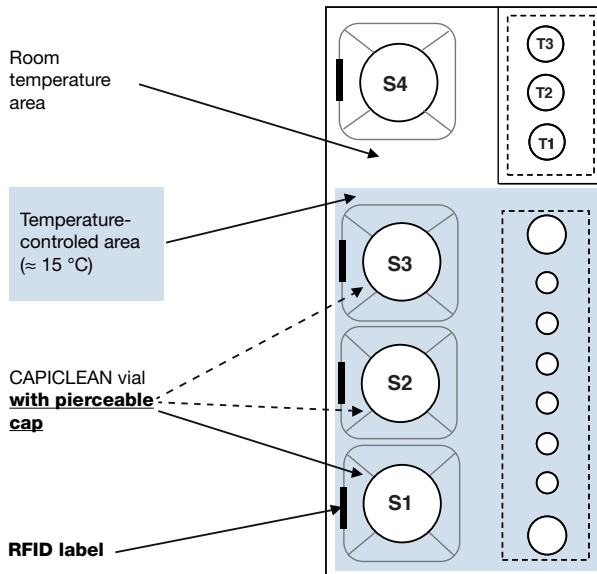


CAPICLEAN vial (front side)



CAPICLEAN vial (back side)

- Place the CAPICLEAN vial in the temperature controlled area of the CAPILLARYS 3 instrument secondary compartment in position S1, S2 or S3, place the side of the vial with the RFID label towards the left.

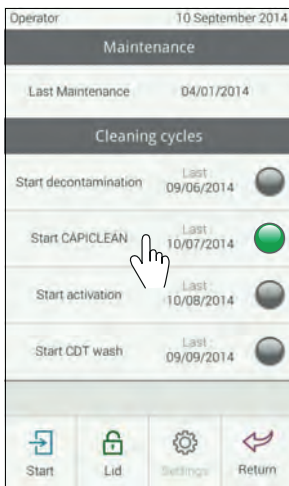


Position of the CAPICLEAN vial in the secondary compartment of CAPILLARYS 3

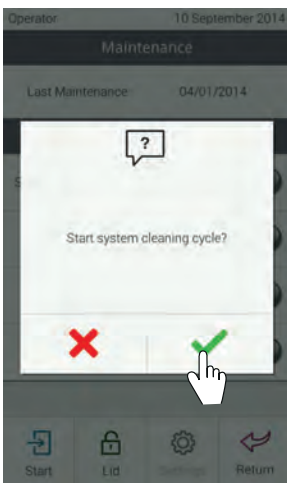
- Close the lid of the secondary compartment.
 - To start the CAPICLEAN cleaning cycle :
- Press "Maintenance & Cleaning" from the main menu :



- In the "Maintenance & Cleaning" menu, press "Start CAPICLEAN" to start the sample probe cleaning with the CAPICLEAN reagent.



- Confirm the startup of the cycle by pressing (= Yes), and if not, press (= No).



NOTES :

- the CAPICLEAN cycle will be performed when the instrument is waiting for rack and without any migration,
- the CAPICLEAN cycle lasts 10 minutes.

WARNING : In the current version of the instrument, the absence of progress bar or message indicating that the CAPICLEAN cycle is in progress may suggest that the instrument is inactive. Wait for the end of the CAPICLEAN cycle before any other processing.

PHOTOS

REPOSITIONNEMENT DU SEPTUM DANS LE BOUCHON À VIS - REPLACING THE SEPTUM INTO THE SCREW CAP

ATTENTION : Le bouchon perçable est constitué de 2 éléments : un bouchon à vis et un septum. Dans le cas où le septum est désolidarisé du bouchon à vis, le repositionner dans le bouchon de la façon suivante et vérifier qu'il est bien enfoncé avant de mettre le bouchon perçable sur le flacon de réactif.

WARNING : The pierceable cap is composed of 2 parts : a screw cap and a septum. When the septum is separated from the screw cap, replace it in the cap as follows and check that it is correctly inserted before placing the pierceable cap on the reagent vial.

Photo 1

Bouchon perçable
Pierceable cap

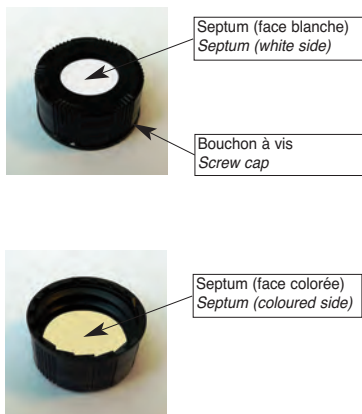


Photo 2

Bouchon à vis et septum désolidarisés
Screw cap and septum separated

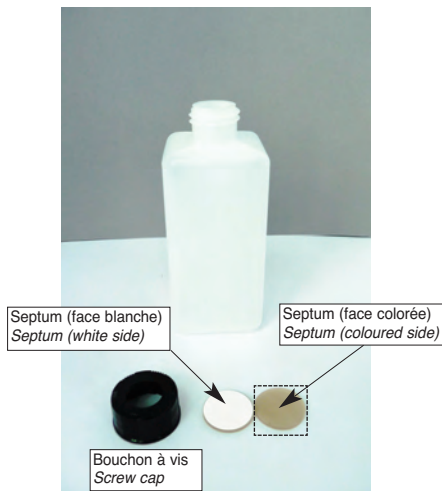


Photo 3

Repositionner le septum dans le bouchon à vis
Replace the septum into the screw cap

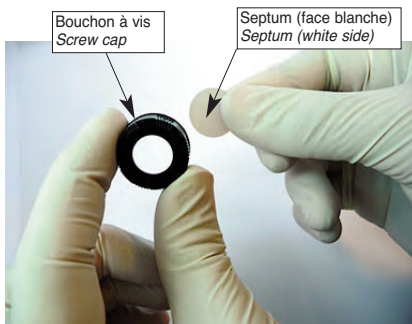


Photo 4

Vérifier que le septum est bien enfoncé dans le bouchon à vis
Check that the septum is correctly inserted into the screw cap



PHOTOS

REPOSITIONNEMENT DU SEPTUM DANS LE BOUCHON À VIS - REPLACING THE SEPTUM INTO THE SCREW CAP

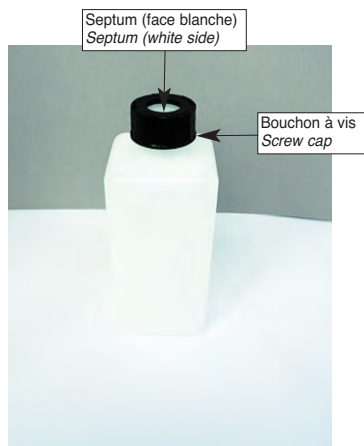
Photo 5

Positionner le bouchon perçable sur le flacon
Place the pierceable cap on the vial



Photo 6

Bouchon perçable installé sur le flacon
Pierceable cap installed on the vial





Parc Technologique Léonard de Vinci
CP 8010 Lisses - 91008 EVRY Cedex - France
Tél. : 33 (0)1 69 89 80 80 - e-mail : sebia@sebia.com

sebia Benelux SCS / Comm. V

Jan Olieslagerstraat, 41
1800 Vilvoorde
Belgique / België
Tél. : 32 (0)2 702 64 64
Fax : 32 (0)2 702 64 60
e-mail : sebia.benelux@sebia.be

sebia Brasil.

Rua Barão do Triunfo, 73, Cj 74
CEP 04602-000
São Paulo
Brasil
Tel. : 55 11 3849 0148
Fax : 55 11 3841 9816
e-mail : sebia@sebia.com.br

sebia GmbH

Münsterfeldallee, 6
36041 Fulda
Deutschland
Tel. : 49 (0)661 3 30 81
Fax : 49 (0)661 3 18 81
e-mail : sebia@sebia.de

sebia Hispania s.A.

C/Sicilia, n° 394
08025 Barcelona
España
Tel. : 34 93 208 15 52
Fax : 34 93 458 55 86
e-mail : sebia@sebia.es

sebia Inc.

400-1705 Corporate Drive
Norcross, GA 30093
U.S.A.
Tel. : 1 770 446 - 3707
Fax : 1 770 446 - 8511
e-mail : info@sebia-usa.com

sebia Italia S.r.l.

Via Antonio Meucci, 15/A
50012 Bagno a Ripoli (FI)
Italia
Tel. : 39 055 24851
Fax : 39 055 0982083
e-mail : info@sebia.it

sebia Swiss GmbH

Verenastrasse, 4b
CH-8832 Wollerau
Switzerland
Tel. : 41 44 787 88 10
Fax : 41 44 787 88 19
e-mail : contact.ch@sebia.com

sebia UK Ltd

River Court, The Meadows Business Park
Station Approach, Blackwater
Camberley, Surrey, GU17 9AB
United Kingdom
Tel. : 44 (0)1276 600636
Fax : 44 (0)1276 38827
e-mail : sales@sebia.co.uk

sebia

Shanghai Representative Office
Cross Tower, Room 2306-07
318 Fuzhou Road
Shanghai 200001
China
Tel. : 00 86 (21) 6350 1655
Fax : 00 86 (21) 6361 2011
e-mail : sebia@sebia.cn